



Clean Energy Transition Roadmap

Decarbonizing Industrial Heating via **CTI** (Clean Tech Inverter) RF Energy

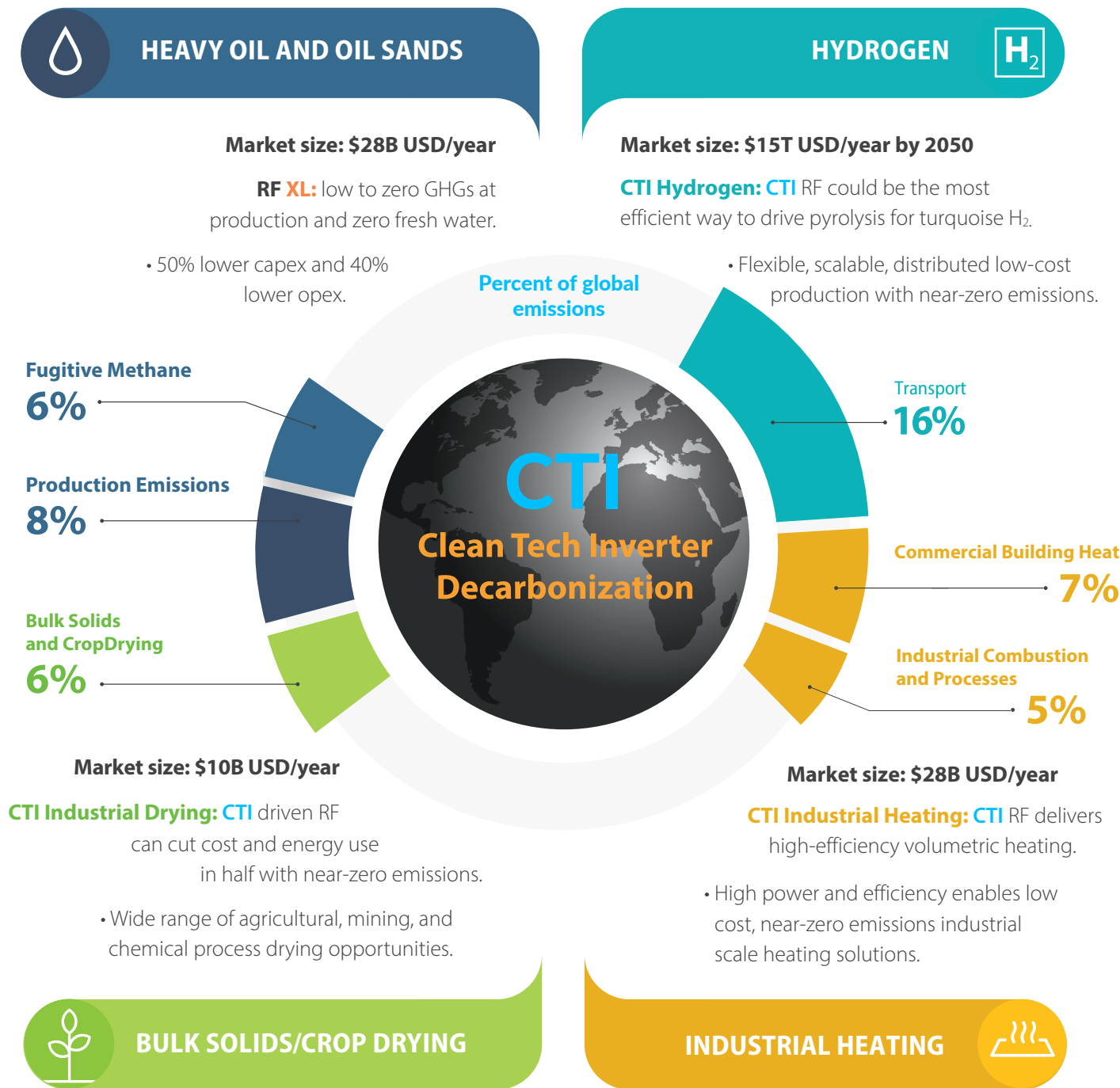


CTI

That's innovation. That's **ACCELEWARE**

ACCELEWARE'S PATENT-PENDING SILICON CARBIDE CLEAN TECH INVERTER (CTI) COULD MASSIVELY REDUCE HEATING-RELATED GHG EMISSIONS IN SECTORS THAT ARE RESPONSIBLE FOR ~47% OF 2020 GLOBAL EMISSIONS¹, PER THE DIAGRAM BELOW.

¹ <https://ourworldindata.org/emissions-by-sector#energy-electricity-heat-and-transport-73-2>



Clean Tech Inverter (CTI): Acceleware's field-proven, proprietary industrial heating technology platform that can enable the decarbonization of multiple industrial heating processes via highly efficient delivery of radio frequency energy.

FOR FURTHER INFORMATION CONTACT:

Mike Tourigny
Chief Operations Officer
403 681 6884
mike.tourigny@acceleware.com
www.acceleware.com



That's innovation. **That's ACCELEWARE**

TSX-V: AXE

Disclaimer: Certain statements in this document include forward-looking information. The forward-looking information in this document is based on assumptions about RF XL technology and commercialization and is subject to various risks including, but not restricted to, the ability of Acceleware Ltd. ("Acceleware", "AXE" or the "Corporation") to fund its research and development ("R&D") activities, the timing of such R&D, the likelihood that the patent applications filed by the Corporation will be granted, continued increased demand for the Corporation's products, the Corporation's ability to maintain its technological leadership in various fields, the future price and cost of producing heavy oil and bitumen, the availability of key components and the Corporation's ability to attract and retain key employees and defend itself against any future patent infringement claims. Actual results could differ materially from those anticipated in such statements. The Corporation assumes no obligation to update forward-looking information except as required by law.